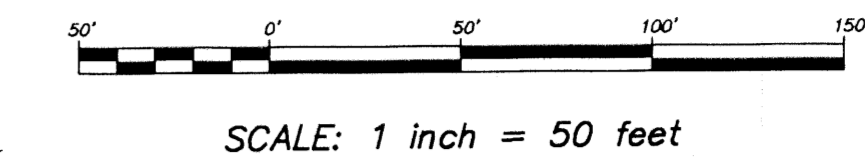
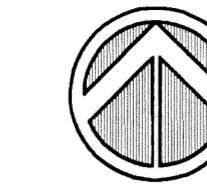


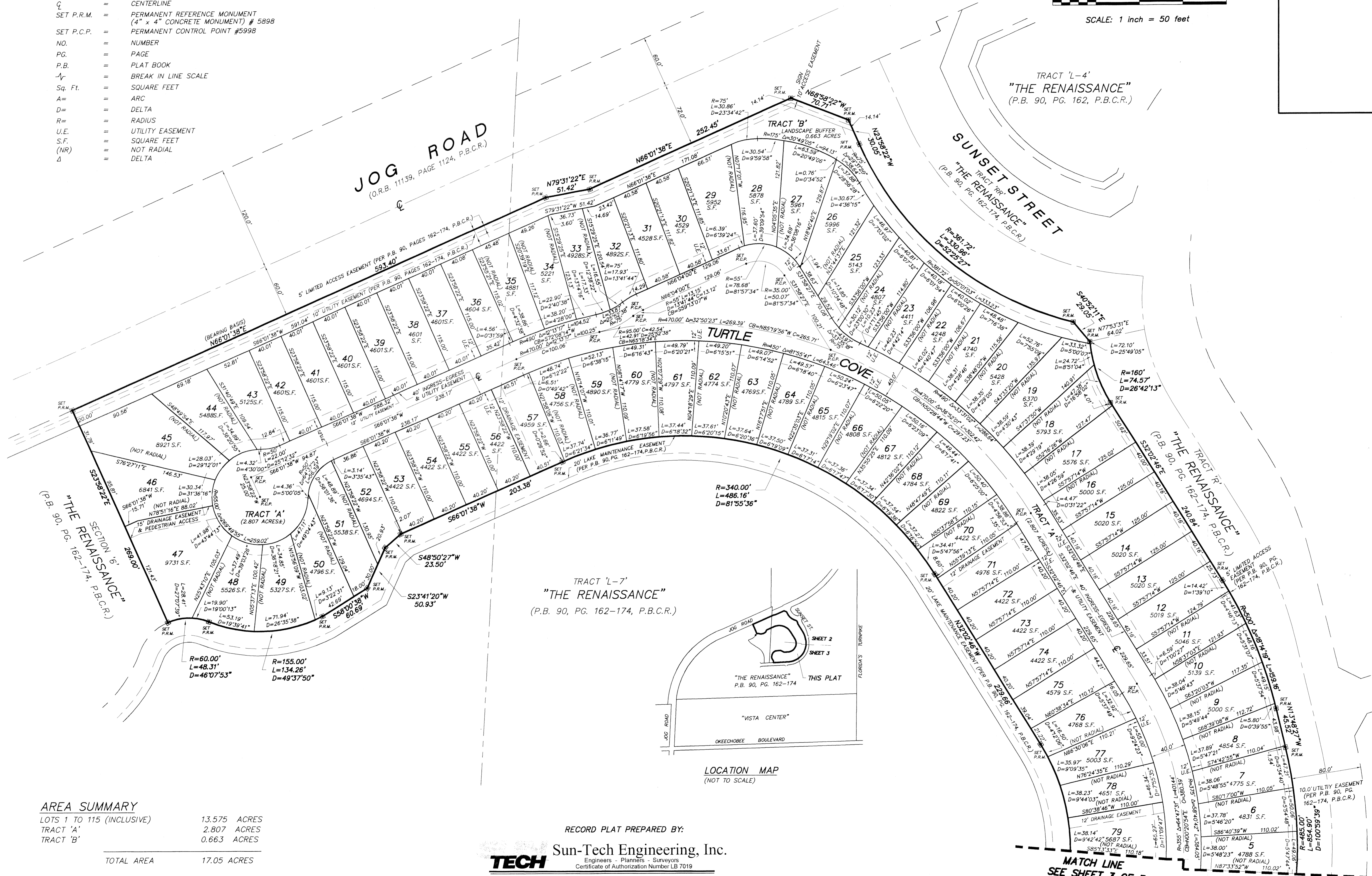
LIBERTY ISLES

A REPLAT OF SECTION 5, "THE RENAISSANCE", ACCORDING TO PLAT BOOK 90, PAGES 162-174, PALM BEACH COUNTY RECORDS LYING IN SECTION 15, TOWNSHIP 43 SOUTH, RANGE 42 EAST, CITY OF WEST PALM BEACH, PALM BEACH COUNTY, FLORIDA



LEGEND:

- = PERMANENT REFERENCE MONUMENT
- = PERMANENT CONTROL POINT
- O.R.B. = OFFICIAL RECORDS BOOK
- CL = CENTERLINE
- SET P.R.M. = PERMANENT REFERENCE MONUMENT (4" x 4" CONCRETE MONUMENT) # 5898
- SET P.C.P. = PERMANENT CONTROL POINT #5998
- NO. = NUMBER
- PG. = PAGE
- P.B. = PLAT BOOK
- /- = BREAK IN LINE SCALE
- Sq. Ft. = SQUARE FEET
- A = ARC
- D = DELTA
- R = RADIUS
- U.E. = UTILITY EASEMENT
- S.F. = SQUARE FEET
- (NR) = NOT RADIAL
- Δ = DELTA

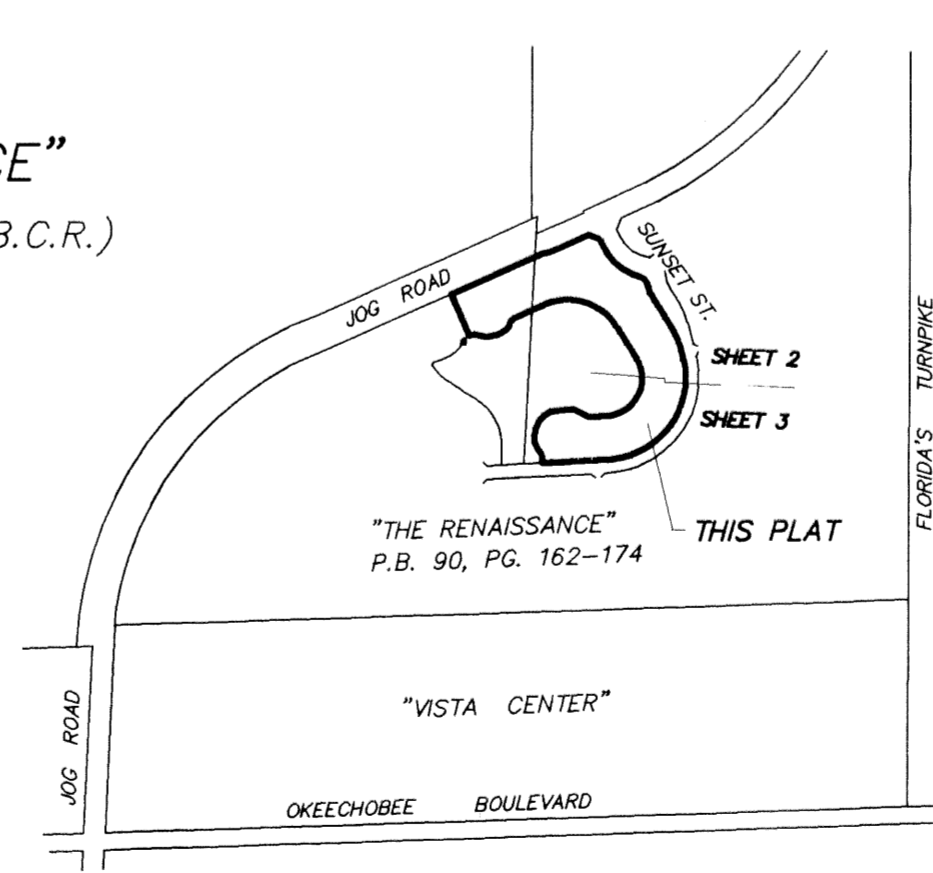


AREA SUMMARY

LOTS 1 TO 115 (INCLUSIVE)	13.575 ACRES
TRACT 'A'	2.807 ACRES
TRACT 'B'	0.663 ACRES
TOTAL AREA	17.05 ACRES

RECORD PLAT PREPARED BY:
Sun-Tech Engineering, Inc.
 Engineers - Planners - Surveyors
 Certificate of Authorization Number LB 7019

TECH
 1600 West Oakland Park Boulevard Phone (954)777-3123
 Ft. Lauderdale, FL 33311 Fax (954)777-3114
 E-Mail: suntech@suntechengineering.com



MATCH LINE
 SEE SHEET 3 OF 3

FILE: K:\PROJECTS\01-xxx\01-2474\wp\01\2474p02.dwg